



Please note that Cypress is an Infineon Technologies Company.

The document following this cover page is marked as “Cypress” document as this is the company that originally developed the product. Please note that Infineon will continue to offer the product to new and existing customers as part of the Infineon product portfolio.

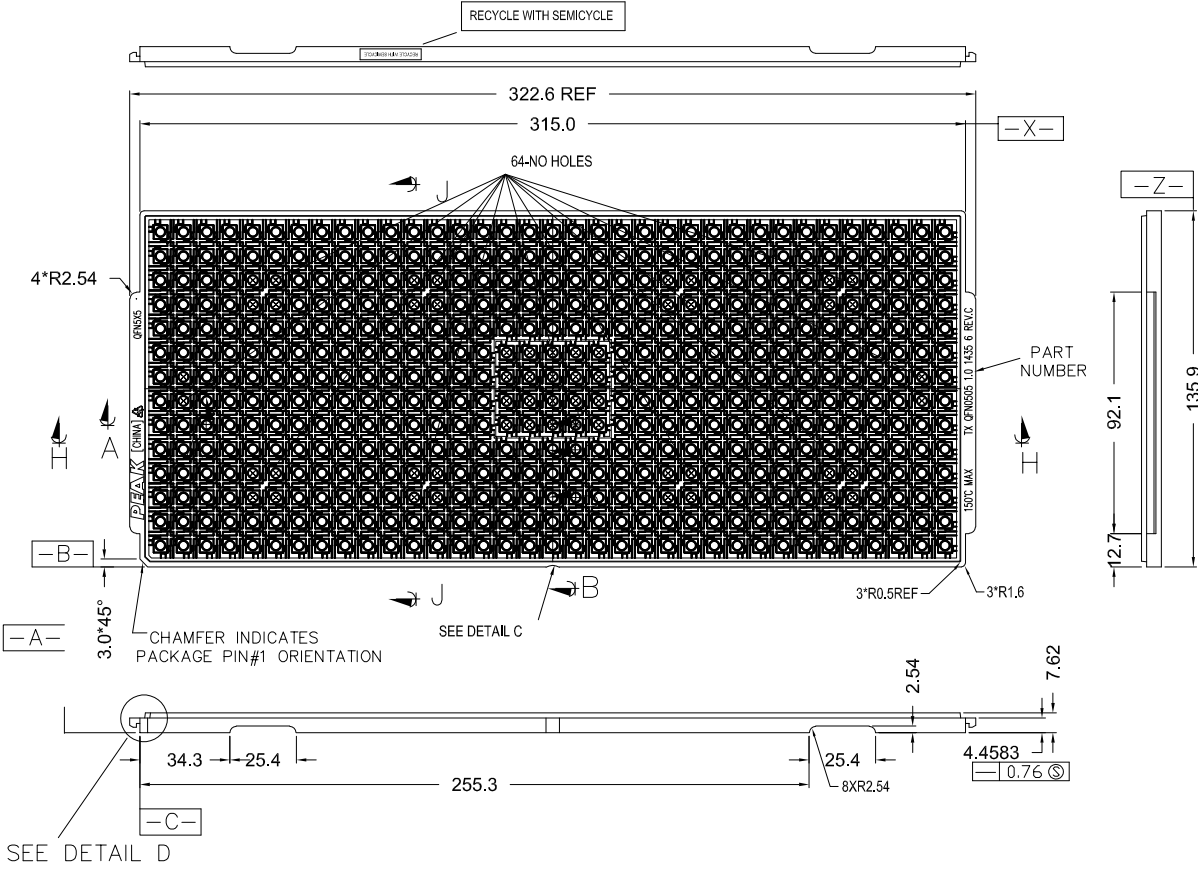
Continuity of document content

The fact that Infineon offers the following product as part of the Infineon product portfolio does not lead to any changes to this document. Future revisions will occur when appropriate, and any changes will be set out on the document history page.

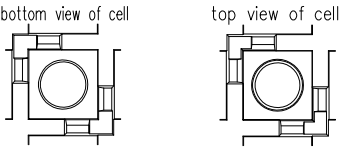
Continuity of ordering part numbers

Infineon continues to support existing part numbers. Please continue to use the ordering part numbers listed in the datasheet for ordering.

REVISIONS						
PAGE	ZONE	REV	ECN	DESCRIPTION	DATE	APPROVED
	-	**	128066	NEW SPEC	6/31/03	
	-	*A	212423	CHANGE DESIGN FROM SQUARE FENCE TO CIRCULAR FENCE FOR IMPROVED SELF ALIGN FEATURE.	3/21/04	
	-	*B	565977	ADDED TABLE FOR P/N OF BLUE TRAY	11/12/06	
	-	*C	3778629	SUNSET REVIEW. CHANGE DRAWING TEMPLATE ALIGNED TO 001-49215	10/14/12	
	-	*D	4577773	CORRECTED DIMENSIONS.	11/24/14	
1	A3	*E	6935242	CHANGE NO-HOLE POCKET COUNT FROM 56 TO 64 AND UPDATE CYPRESS LOGO	07/27/20	




- NOTES :
1. MATERIAL - PP6.
 2. ALL DIMENSIONS ARE IN MILLIMETERS.
 3. TOLERANCES - X.X=±0.25
- X.XX=±0.13
DRAFT ANGLES FOR REFERENCES. UNLESS OTHERWISE SPECIFIED.
 4. ESD - SURFACE RESISTIVITY - 10⁵ TO 10¹¹ OHMS/SQ.
 5. FOR PACKAGE - QFN5X5
 6. PART NO. : TX QFN0505 1.0 1435 6 REV.C (PLEASE INDICATE ON PURCHASE ORDER).
 7. DATECODE AT TRAY BOTTOM SIDE.



TLF5x5 - B	BLACK
TLF5x5 - R	RED
TLF5x5 - BL	BLUE

UNLESS OTHERWISE SPECIFIED ALL DIMENSIONS ARE IN MILLIMETERS STANDARD TOLERANCES ON:		DESIGNED BY	DATE
DECIMALS	ANGLES	DRAWN BY	DATE
.X ±	±	KWTE	07/27/20
.XX ±		CHECKED BY	DATE
.XXX ±		N/A	N/A
MATERIAL	SEE NOTES	APPROVED BY	DATE
FINISH		LKSU	07/27/20
		APPROVED BY	DATE
		MKCC	07/27/20
		APPROVED BY	DATE

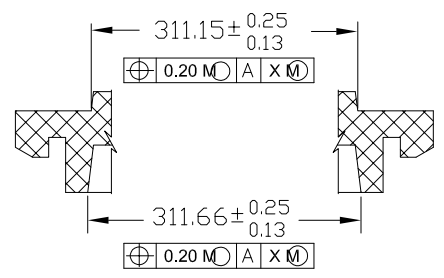
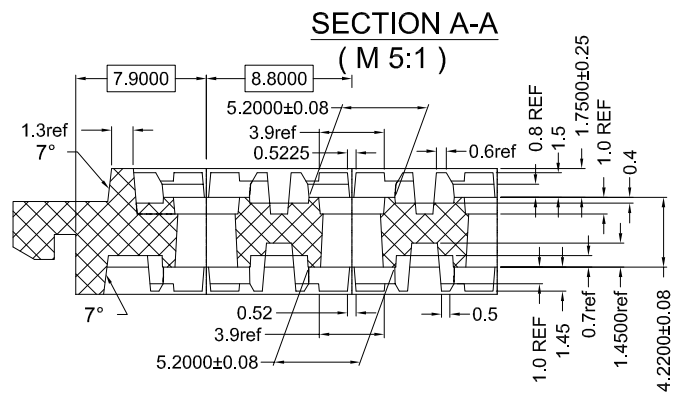

CYPRESS
 Company Confidential

TITLE
TRAY, QFN 32 (5x5x1.0)

SIZE A	PART NO. TLF5x5-*	DWG NO 51-52107	REV *E
-----------	----------------------	--------------------	-----------

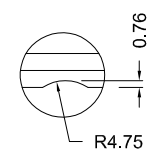
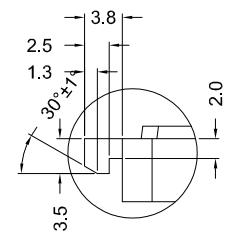
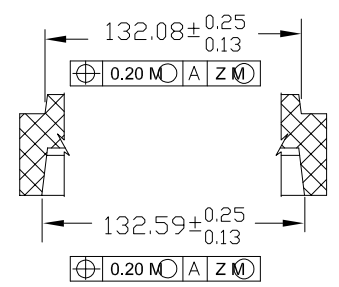
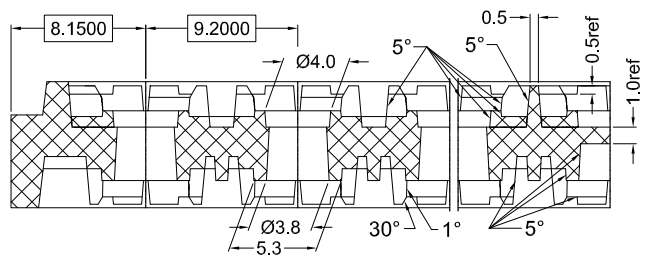
SCALE: NTS SHEET 1 OF 2

THIS DRAWING CONTAINS INFORMATION WHICH IS THE PROPRIETARY PROPERTY OF CYPRESS SEMICONDUCTOR CORPORATION. THIS DRAWING IS RECEIVED IN CONFIDENCE AND ITS CONTENTS MAY NOT BE DISCLOSED WITHOUT WRITTEN CONSENT OF CYPRESS SEMICONDUCTOR CORPORATION.



SECTION B-B (M 5:1)

SECTION C-C (M 5:1)



NOTE: SCALLOP IS CENTERED ON SIDE OF TRAY

THIS DRAWING CONTAINS INFORMATION WHICH IS THE PROPRIETARY PROPERTY OF CYPRESS SEMICONDUCTOR CORPORATION. THIS DRAWING IS RECEIVED IN CONFIDENCE AND ITS CONTENTS MAY NOT BE DISCLOSED WITHOUT WRITTEN CONSENT OF CYPRESS SEMICONDUCTOR CORPORATION.

CYPRESS Company Confidential			
TITLE TRAY, QFN 32 (5x5x1.0)			
SIZE A	PART NO. TLF5x5-*	DWG NO 51-52107	REV *E
SCALE: NTS		SHEET 2 OF 2	