



Please note that Cypress is an Infineon Technologies Company.

The document following this cover page is marked as “Cypress” document as this is the company that originally developed the product. Please note that Infineon will continue to offer the product to new and existing customers as part of the Infineon product portfolio.

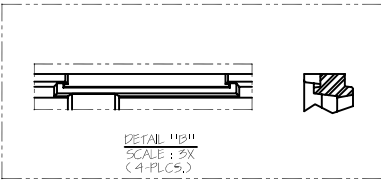
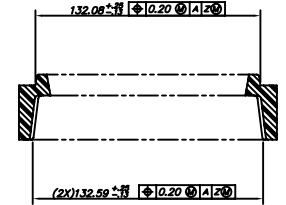
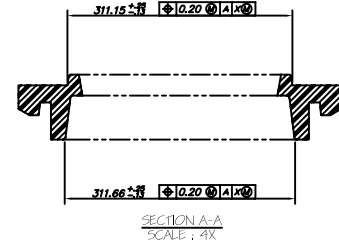
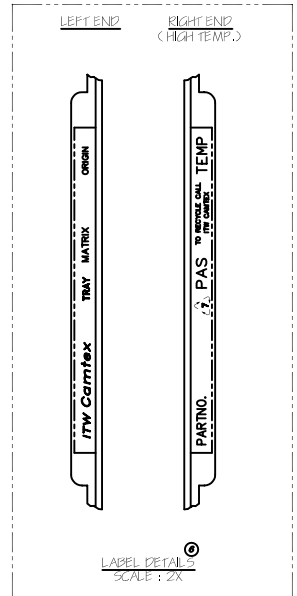
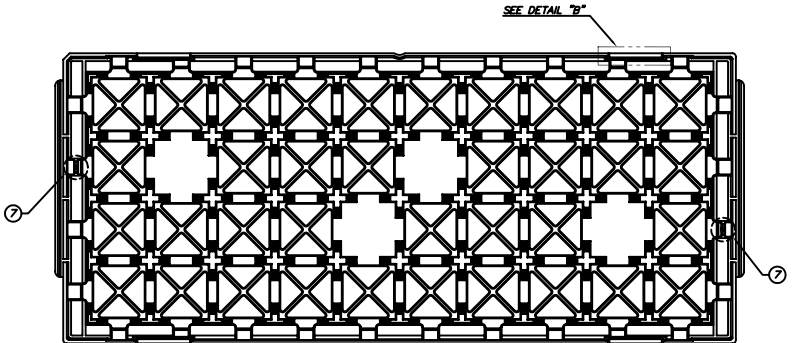
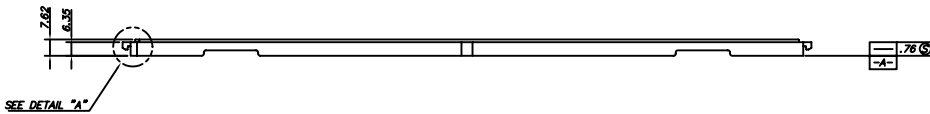
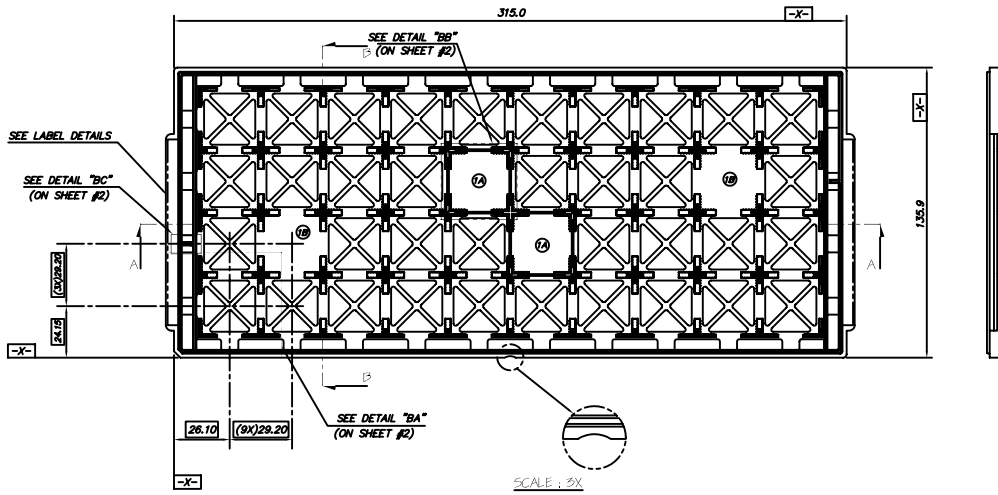
Continuity of document content

The fact that Infineon offers the following product as part of the Infineon product portfolio does not lead to any changes to this document. Future revisions will occur when appropriate, and any changes will be set out on the document history page.

Continuity of ordering part numbers

Infineon continues to support existing part numbers. Please continue to use the ordering part numbers listed in the datasheet for ordering.

REVISIONS						
PAGE	ZONE	REV	ECN	DESCRIPTION	DATE	APPROVED
1	-	**	55356	NEW RELEASE	04/01/98	
		A	127882	Change title from 292 BGA tray 27x27x2.33MM to Tray, 292/272 BGA (27x27x2.33MM), Change P/N from TBG2727233 to TBG27272.33-, Added note 10 for black and red p/n	6/16/03	
		*B	2781474	CHANGE TO STANDARD DRAWING FORMAT	04/01/98	TSV
		C	4234639	ADDED TBG27272.33- ON DOCUMENT TITLE		
				SPEC FOR SUNSET REVIEW. NO CHANGE.	01/02/13	QAD



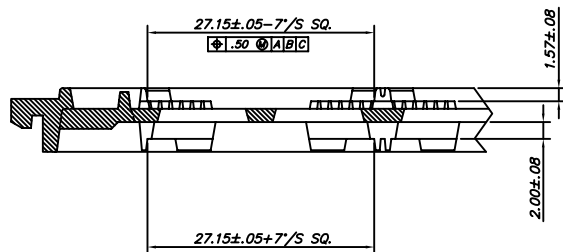
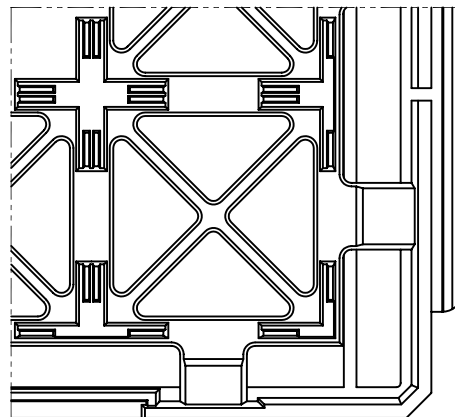
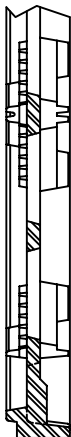
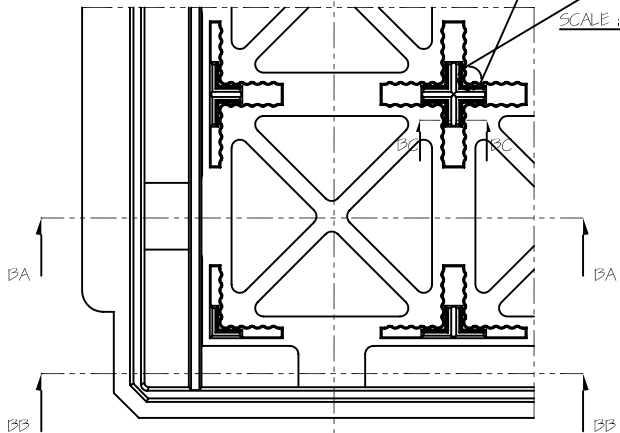
- NOTES:
- (A) (B) CENTER CLOSED NESTS AND SEMI-CLOSED NESTS SEE SHEET #2 FOR DETAILS
 - NON-BAKEABLE TRAYS SHOULD NOT BE EXPOSED TO TEMPERATURES GREATER THAN 50° C (122° F) AT ANY TIME
 - INTERPRET DIMENSIONS AND TOLERANCES IN ACCORDANCE WITH ANSI Y14.5M-1982
 - UNLESS OTHERWISE NOTED 1/2" DRAFT ON ALL VERTICAL SURFACES
 - DWG/PART No. 683-01 : HIGH TEMP., 180°C MAXIMUM
 - END TABS LISTED ARE FOR EXAMPLE ONLY. FOR A COMPLETE LISTING OF AVAILABLE MATERIALS SEE DOC. #DN-002
 - LOCKING MECHANISM: 2-PLACES, SEE SHEET #2 FOR DETAILS
 - REVISION LEVEL AND DATE CODES WILL BE ON BOTTOM OF TRAY. WHEN POSSIBLE REVISION LEVEL WILL BE LOCATED NEAR 45° CHAM.
 - THERE ARE 40 UNITS PER TRAY.
 - BLACK TRAY P/N : TBG27272.33-B
RED TRAY P/N : TBG27272.33-R

UNLESS OTHERWISE SPECIFIED ALL DIMENSIONS ARE IN MILLIMETERS STANDARD TOLERANCES ARE:		DESIGNED BY	DATE	 CYPRESS Company Confidential
DECIMALS	ANGLES	DRAWN BY	DATE	
.XX ± 0.05	± 1°	TZWIMP1	10/09/09	
.XXX ±		CHECKED BY	DATE	
.XXXX +		XANC	01/02/13	
		APPROVED BY	DATE	
		QAD	01/02/13	
MATERIAL	DEFAULT TEXT	APPROVED BY	DATE	
		AZY	01/02/13	
FINISH	DEFAULT TEXT	APPROVED BY	DATE	
		TITLE		
		TRAY , BGA 292/272 (27 X 27 X 2.33MM) TBG27272.33-**		
	SIZE	PART NO.	DWG NO	REV
	A	TBG27272.33-**	51-52032	*C
SCALED TO FIT			SHEET 1 OF 2	

THIS DRAWING CONTAINS INFORMATION WHICH IS THE PROPRIETARY PROPERTY OF CYPRESS SEMICONDUCTOR CORPORATION. THIS DRAWING IS RECEIVED IN CONFIDENCE AND ITS CONTENTS MAY NOT BE DISCLOSED WITHOUT WRITTEN CONSENT OF CYPRESS SEMICONDUCTOR CORPORATION.

DETAIL "BA"

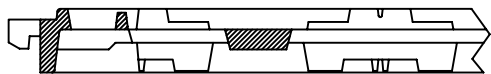
SCALE: 9X



SECTION BA-BA

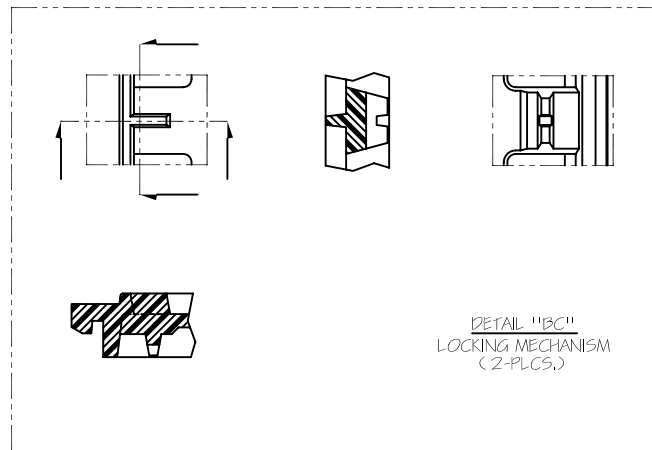
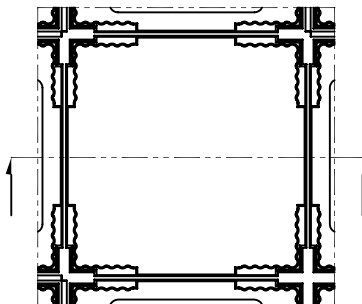


SECTION BC-BC
(SCALE: 5X)



SECTION BB-BB

DETAIL "BB"
CENTER VACUUM CELL
(2-PLCS.)



DETAIL "BC"
LOCKING MECHANISM
(2-PLCS.)



CYPRESS
Company Confidential

TITLE
TRAY , BGA 292/272 (27 X 27 X 2.33MM) TBG27272.33--**

SIZE A	PART NO. TBG27272.33--**	DWG NO 51-52032	REV *C
-----------	-----------------------------	--------------------	-----------

SCALED TO FIT SHEET 2 OF 2

THIS DRAWING CONTAINS INFORMATION WHICH IS THE PROPRIETARY PROPERTY OF CYPRESS SEMICONDUCTOR CORPORATION. THIS DRAWING IS RECEIVED IN CONFIDENCE AND ITS CONTENTS MAY NOT BE DISCLOSED WITHOUT WRITTEN CONSENT OF CYPRESS SEMICONDUCTOR CORPORATION.