



Please note that Cypress is an Infineon Technologies Company.

The document following this cover page is marked as “Cypress” document as this is the company that originally developed the product. Please note that Infineon will continue to offer the product to new and existing customers as part of the Infineon product portfolio.

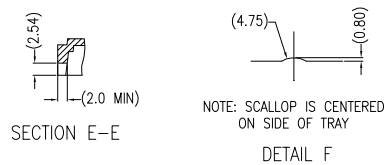
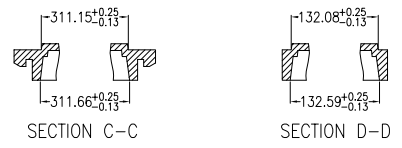
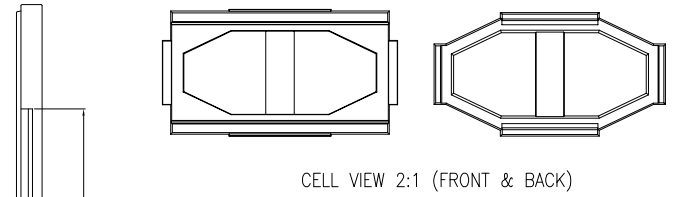
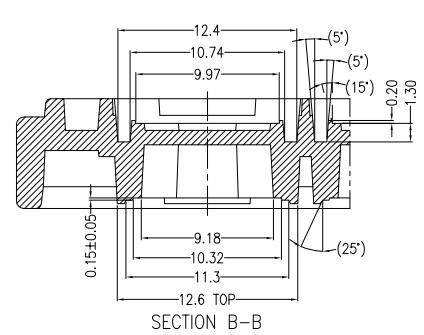
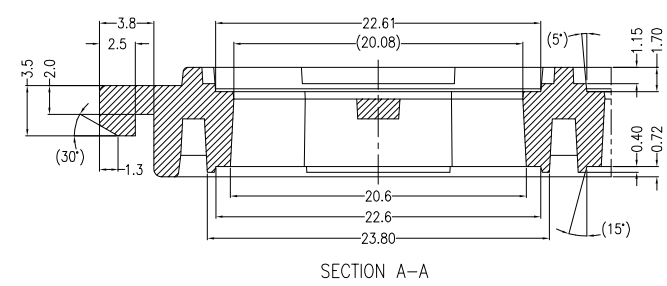
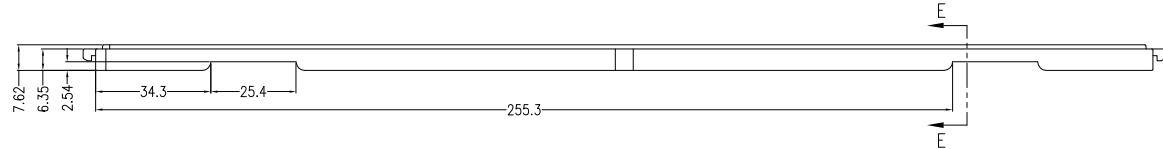
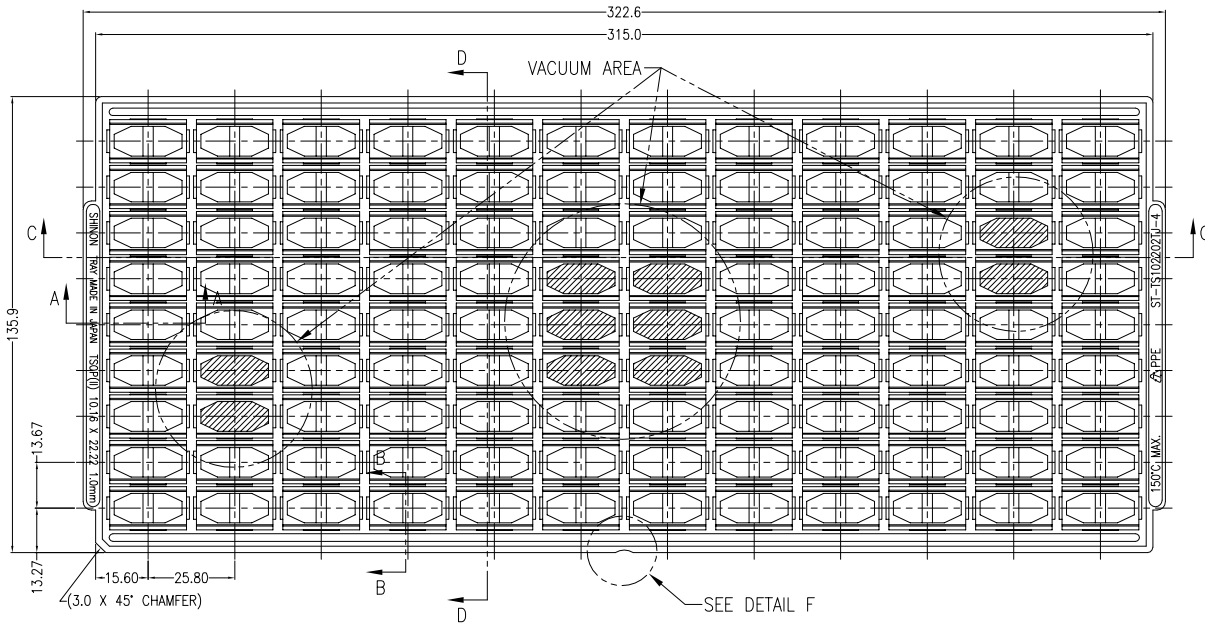
Continuity of document content

The fact that Infineon offers the following product as part of the Infineon product portfolio does not lead to any changes to this document. Future revisions will occur when appropriate, and any changes will be set out on the document history page.

Continuity of ordering part numbers

Infineon continues to support existing part numbers. Please continue to use the ordering part numbers listed in the datasheet for ordering.

REVISIONS						
PAGE	ZONE	REV	ECN	DESCRIPTION	DATE	APPROVER
1	-	**	113650	NEW RELEASE	03/05/02	
1	-	*A	3240984	UPDATED DRAWING CHANGE DRAWING TEMPLATE	04/28/11	
1	-	*B	3604902	REMOVE LAYER COLORS ON PDF FILE	05/04/12	
1	-	*C	4772940	UPDATE DRAWING TEMPLATE	05/21/15	



TRAY PURCHASING INFORMATION

*VENDOR & TRAY DESIGNATOR
 SHINON TRAY MADE IN JAPAN TSOP(II) 10.16 X 22.22 1.0mm

*TEMPERATURE RATING & RECYCLE MARK & MATERIAL & PART NUMBER
 150°C MAX. PPE ST-TS102202TJ-4

- NOTES:
1. SURFACE ELECTRIC RESISTIVITY: $1 \times 10^5 \sim 9 \times 10^9 \Omega/\text{SQ}$. (BY TEST ASTM D257)
 2. WARPAGE IS WITHIN 0.76mm.
 3. THE NUMERICAL VALUE IN PARENTHESES ARE REFERENCE VALUE.

UNLESS OTHERWISE SPECIFIED		DESIGNED BY	DATE	
ALL DIMENSIONS ARE IN MILLIMETERS		DRAWN	DATE	
STANDARD TOLERANCES ON:		CHK BY	DATE	
DECIMALS	ANGLES	APPROVED BY	DATE	
XX ± 0.25	± 0.5	DATE	DATE	
XXX ± 0.150		DATE	DATE	
XXXX ± 0.1000		DATE	DATE	
MATERIAL	SEE NOTE	APPROVED BY	DATE	
FINISH	SEE NOTE	DATE	DATE	
TITLE: 54LD TSOP II SHIPPING TRAY SIZE: A PART NO.: TZSS4 DWG NO.: 51-52088 REV: *C				
DO NOT SCALE				SHEET 1 OF 1