



**Please note that Cypress is an Infineon Technologies Company.**

The document following this cover page is marked as “Cypress” document as this is the company that originally developed the product. Please note that Infineon will continue to offer the product to new and existing customers as part of the Infineon product portfolio.

**Continuity of document content**

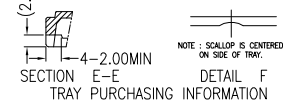
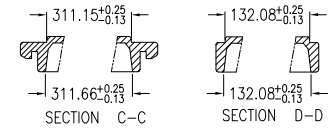
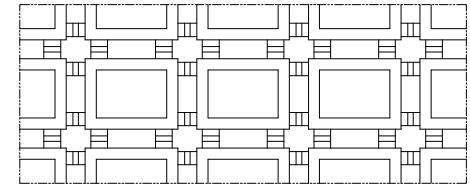
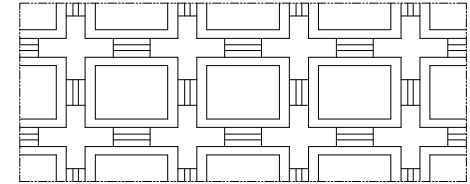
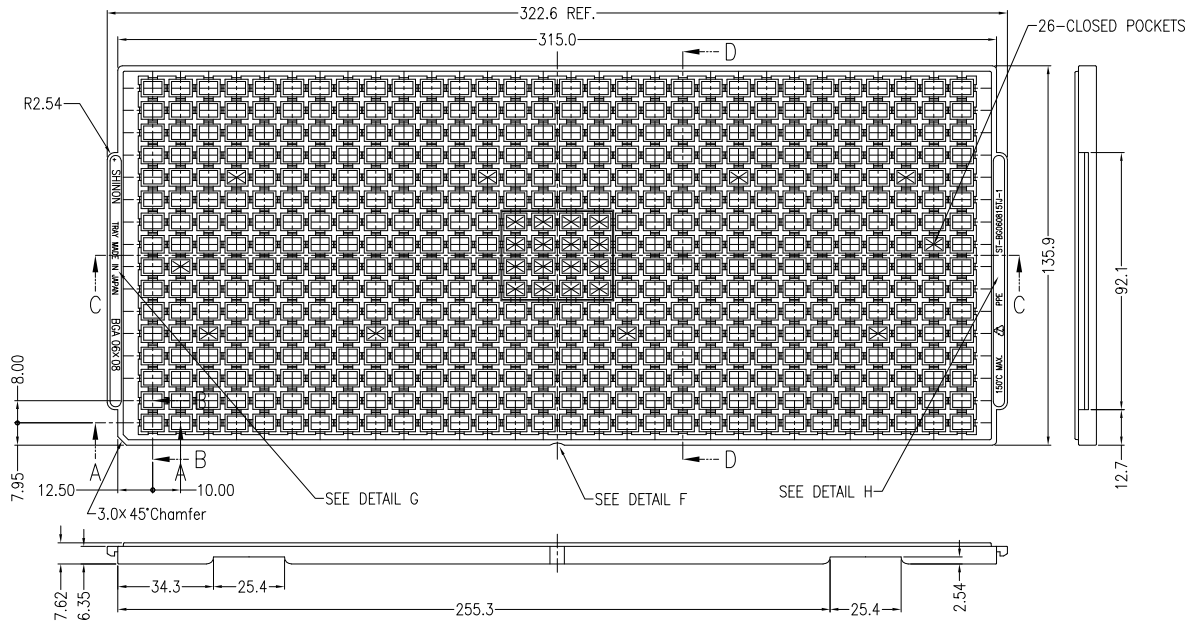
The fact that Infineon offers the following product as part of the Infineon product portfolio does not lead to any changes to this document. Future revisions will occur when appropriate, and any changes will be set out on the document history page.

**Continuity of ordering part numbers**

Infineon continues to support existing part numbers. Please continue to use the ordering part numbers listed in the datasheet for ordering.

- NOTES:
1. TRAY MUST MEET ALL REQUIREMENTS OF AMKOR/ANAM # 01-0431-2283 PROCUREMENT SPEC FOR SHIPPING TRAY.
  2. BAKEABLE TRAYS ARE INTENDED TO BE CONTINUOUSLY BAKED FOR 48 HOURS AT THE BAKE TEMPERATURE AS SPECIFIED.
  3. THERE ARE 160 UNITS PER TRAY.
  4. TRAY VACUUM PICKUP METHOD REQUIRES A 28 MM SQUARE (MINIMUM) WALLD PICKUP AREA, LOCATED AS CLOSE TO THE CENTER OF THE TRAY AS IS PRACTICABLE.
  5. CHAMFER DENOTES PACKAGE PIN#1 ORIENTATION.
  6. INTERPRET DIMENSIONS AND TOLERANCES IN ACCORDANCE WITH ASME Y14.5M-1994.
  7. CONTROLLING DIMENSIONS ARE IN MILLIMETERS.
  8. REVISION LETTERED SHALL BE ENGRAVED TO THE RIGHT OF THE SID NUMBER ON SIDE OF THE TRAY AND SHALL BE CHANGED IN ALPHABETICAL ORDER (A-Z) WHEN ANY CHANGE OF DIMENSIONS, DESIGNS AND/OR MATERIAL PROPERTIES OCCUR.
  9. ESD - SURFACE RESISITIVITY SHALL BE  $\geq 1 \times 10^9 < 1 \times 10^{12}$  OHMS/SQUARE PER EIA, JEDEC, ACH TRAY SPECIFICATIONS.
  10. MEETS JEDEC CO-020.

REVISIONS						
PAGE	ZONE	REV	ECN	DESCRIPTION	DATE	APPROVED
1	-	**	113925	NEW RELEASE	03/15/02	
1	-	*A	3209977	UPDATED DRAWING CHANGE DRAWING TEMPLATE	03/31/11	QAD/KGL
1	-	*B	4503805	SUNSET REVIEW. NO CHANGE.	09/16/14	QAD



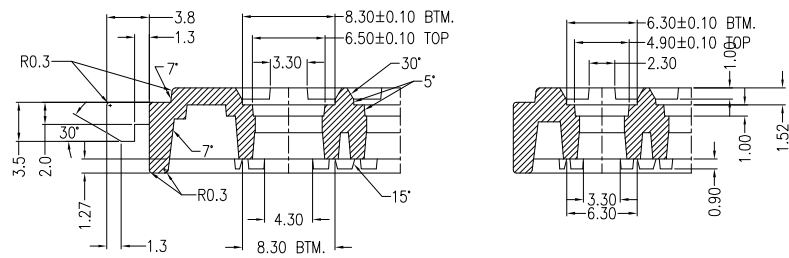
TRAY PURCHASING INFORMATION

\* VENDOR & TRAY DESIGNATOR  
SHINON TRAY MADE IN JAPAN BGA 06X08

DETAIL G

\* TEMPERATURE RATING & RECYCLE MARK & MATERIAL & PART NUMBER  
150°C MAX. PPE ST-80608151-1

DETAIL H



SECTION A-A

UNLESS OTHERWISE SPECIFIED ALL DIMENSIONS ARE IN MILLIMETERS STANDARD TOLERANCES ON:		DESIGNED BY	DATE	
DECIMALS	ANGLES	DRAWN BY	DATE	
.X ± 0.25	± 0.5°	AOQ	03/31/11	
.XX ± 0.13		CHECKED BY	DATE	
.XXX ±		UDD	09/16/14	
MATERIAL	SEE NOTES	APPROVED BY	DATE	TITLE
FINISH		UDD	09/16/14	48 VFBGA (6 X 8 X 1.0MM) SHIPPING TRAY
		APPROVED BY	DATE	SIZE
				A
				PART NO.
				TBA060810
				DWG NO
				51-52089
				REV
				*B
				SCALED TO FIT
				ENG'G REV
				SHEET 1 of 1

THIS DRAWING CONTAINS INFORMATION WHICH IS THE PROPRIETARY PROPERTY OF CYPRESS SEMICONDUCTOR CORPORATION. THIS DRAWING IS RECEIVED IN CONFIDENCE AND ITS CONTENTS MAY NOT BE DISCLOSED WITHOUT WRITTEN CONSENT OF CYPRESS SEMICONDUCTOR CORPORATION.